



1 2A RUNDELL CRESCENT LONDON, NW4 3AZ

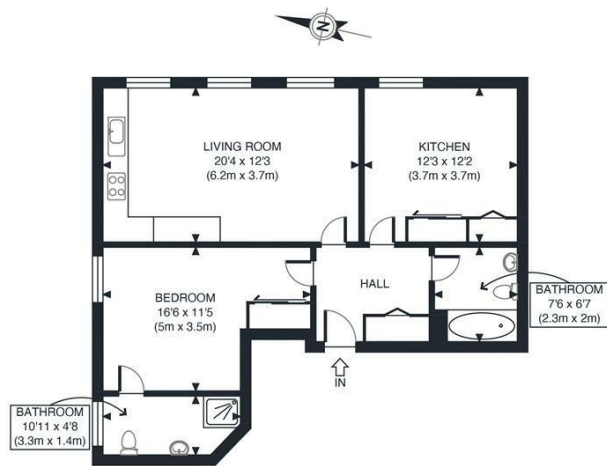
£2,100 PCM

A beautifully presented, two double bedroom apartment finished with bespoke fixtures and fittings throughout, offering bright and spacious accommodation, spacious reception room, fully fitted modern kitchen with dining area and fully modern tiled bathroom. Further benefits include wood floors, high ceilings & two bedrooms with fitted wardrobes.

Located near Hendon tube station with Sainsburys right on your door step for your weekly shop. Brent Cross is nearby for some weekend shopping.

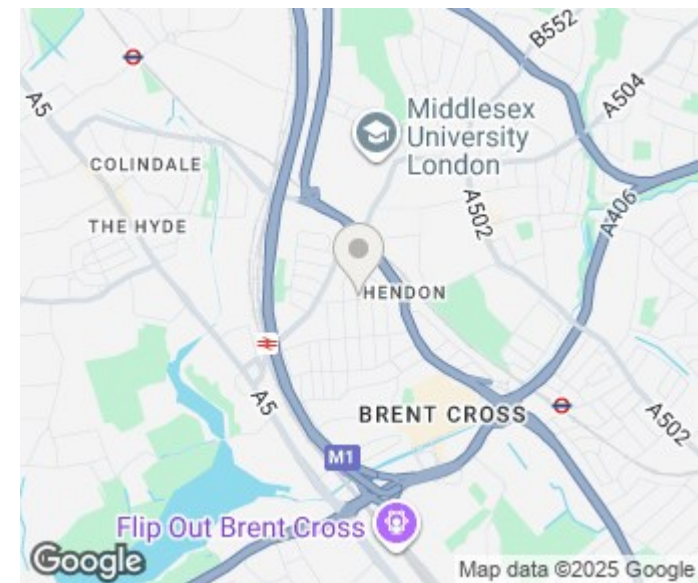
Available 2nd October 2025 on a furnished basis.

Hemmingfords



FIRST FLOOR
GROSS INTERNAL
FLOOR AREA 753 SQ FT

APPROX. GROSS INTERNAL FLOOR AREA 753 SQ FT / 70 SQM	Rundell Crescent
Disclaimer: Floor plan measurements are approximate and are for illustrative purposes only. While we do not doubt the floor plan accuracy and completeness, you or your advisors should conduct a careful, independent investigation of the property in respect of monetary valuation	date 24/05/23 photoplan



Energy Efficiency Rating		
	Current	Potential
Very energy efficient - lower running costs		
(92 plus) A		
(81-91) B		
(69-80) C	74	74
(55-68) D		
(39-54) E		
(21-38) F		
(1-20) G		
Not energy efficient - higher running costs		
England & Wales	EU Directive 2002/91/EC	

Agents Note: Whilst every care has been taken to prepare these particulars, they are for guidance purposes only. All measurements are approximate and are for general guidance purposes only and whilst every care has been taken to ensure their accuracy, they should not be relied upon and potential buyers/tenants are advised to recheck the measurements

Hemmingfords Lettings & Sales
Second Floor
34 Upper Street
London
N1 0PN

020 3890 7470
info@hemmingfords.co.uk
www.hemmingfords.co.uk

Hemmingfords